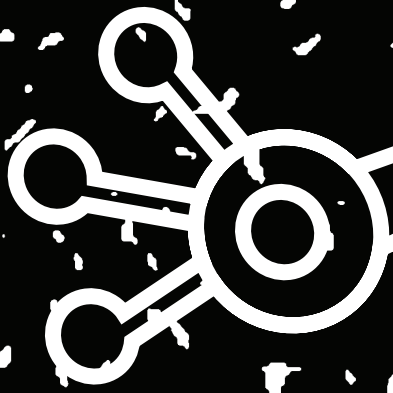


GO
2
COLLEGE DAY

PSU



PSU PROGRAMS

AISES

American Indian Science & Engineering Society:

AISES has been working since 1977 to substantially increase American Indian, Alaska Native, and Pacific Islander representation in science, technology, engineering, and math (STEM) fields as students, professionals, mentors, and leaders.

www.aises/pdx.edu



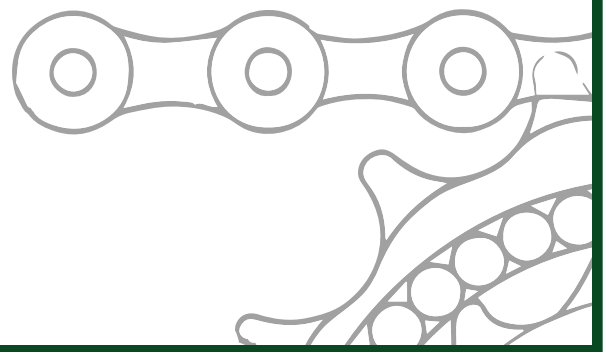
PIC

Pacific Islanders Club: It is our mission to provide cultural and social events to enhance the campus experience and education of PSU Pacific Islander students. <https://www.facebook.com/pac.isles>

UISHE

United Indian Students of Higher Education: keeps students and the community informed about current Native American activities around the area. UISHE represents a diverse tribal membership throughout North America and is vital in supporting students with various tribal affiliations, ages and backgrounds.

<http://www.uishe.groups.pdx.edu/>

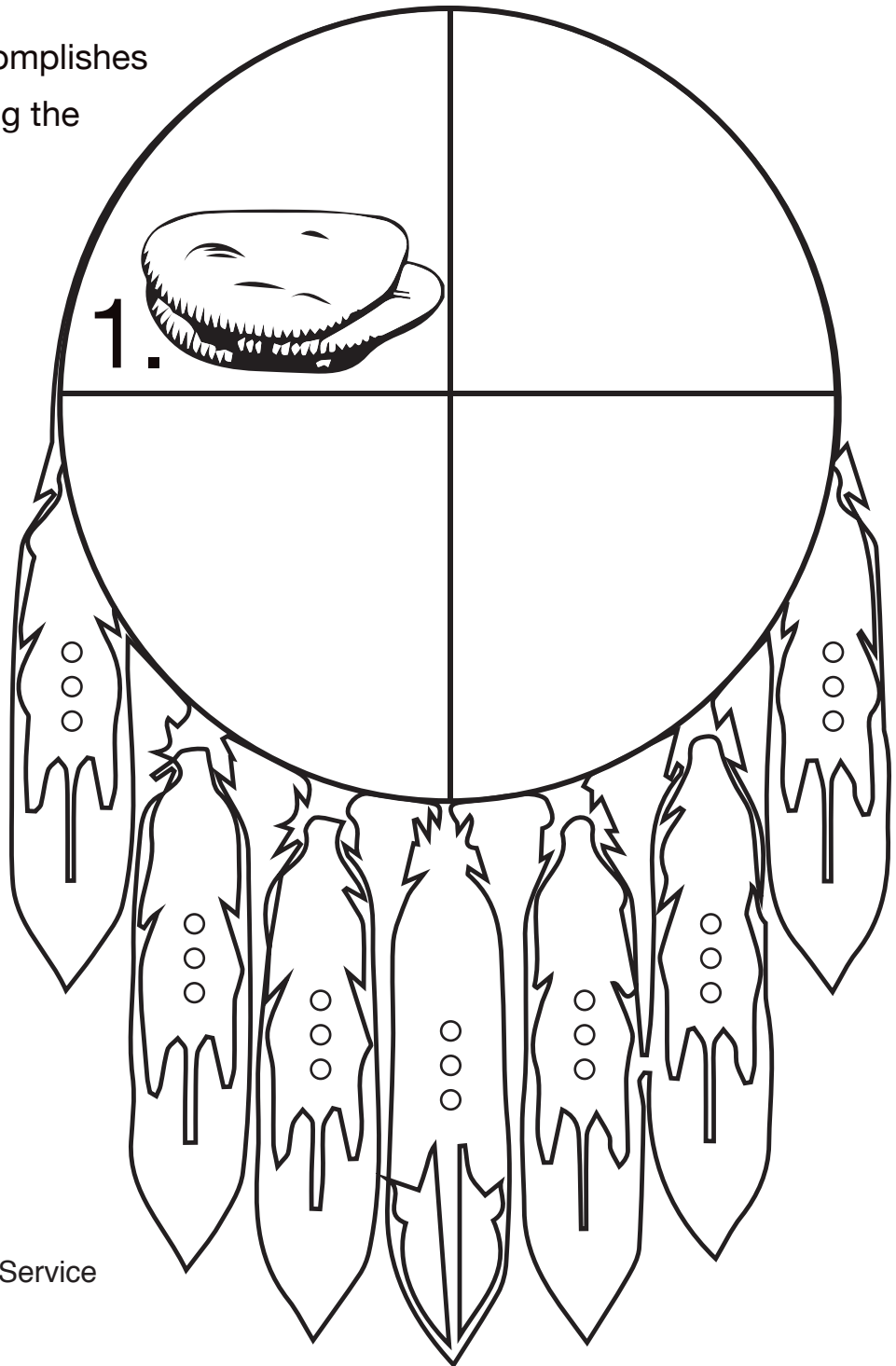


PSU PROGRAMS

Healing Feathers

Healing Feathers accomplishes this through integrating the unique spiritual and cultural beliefs of American Indian/ Alaska Native students with raising awareness of suicide among the Native American populations.

**DRAW 3 REASONS
TO STAY ALIVE**



Dean Azule

Pima Indian AZ
Coordinator, Diversity
and Multicultural Student Service
azule@pdx.edu

PSU PROGRAMS

Portland State University's Graduate School of Education is recruiting student candidates for its new project, **American Indian Urban Teacher Program**, funded by the Office of Indian Education, the U.S. Department of Education. Native American students enrolled in the graduate program will be awarded tuition and fees

LE_RN and
L_ST_N to
YOUR E_D_RS

Letters Missing: E L A E I

Maria Tenorio,
Pueblo/Tarascan
Ed.D., Project Director,
Graduate School of Education
American Indian Urban Teacher Program
tenorio@pdx.edu

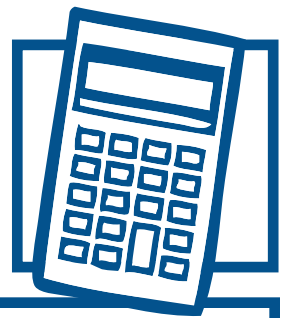


EXPLORING *your interests*

MAKE A LIST OF YOUR SKILLS AND INTERESTS....

Think hard about what you enjoy? What you are good at?

IF YOU ARE GOOD AT MATH,
then look at these possible careers...



Sudoku

1		2		3	4	5	9	8
4			5		1	7	2	
5	8	6	9	2			3	
3	5		1		6	2		7
6	4		2	5	8		1	9
8		1	3		9		4	5
	1			6	2	9	5	3
	6	5	8		3			2
2	3	4	7	9		8		1

Statistician

Electrical Engineer

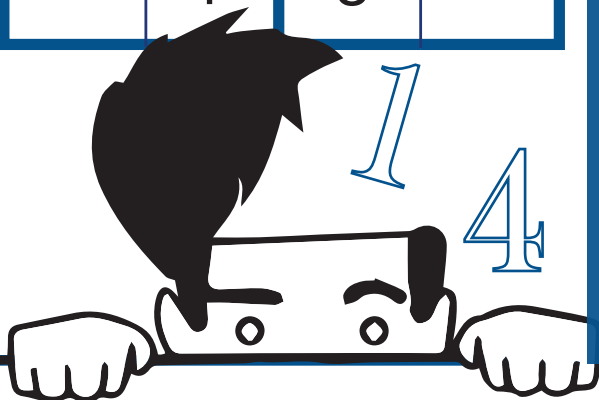
Surveyor

Mathematician

Cost Estimator

Actuary

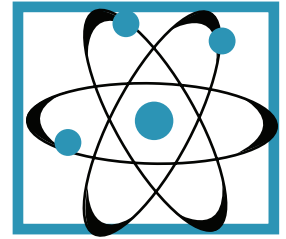
	2	4	
1			3
4			2
	1	3	



The Fariborz Maseeh Department of Mathematics and Statistics is dedicated to excellence in research & teaching in all areas of mathematics, statistics and mathematics education. The Department provides free tutors for lower division algebra, calculus and statistics.

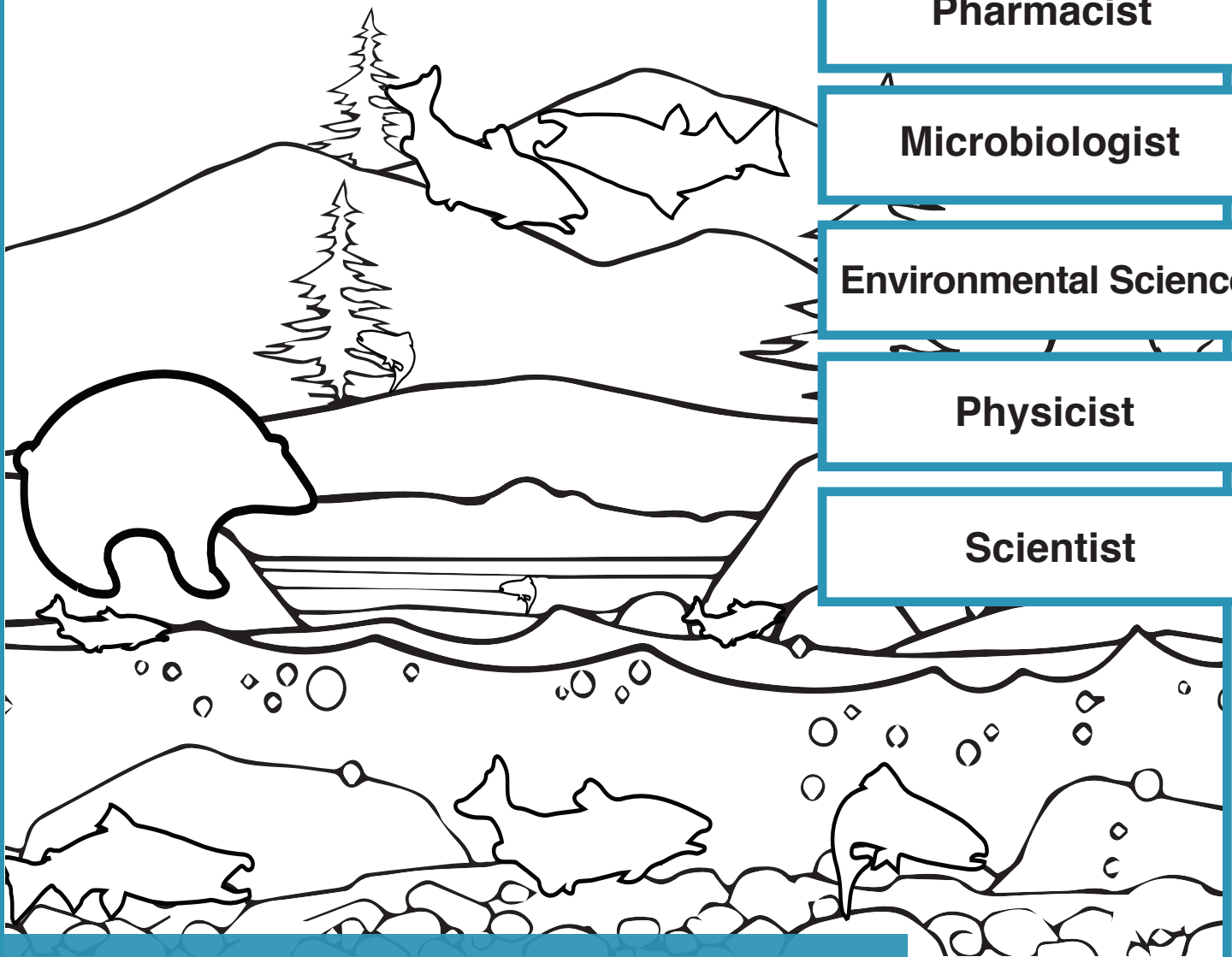
<http://www.pdx.edu/math/>

IF YOU LIKE THE SCIENCES,
then look at these possible careers...



Can you find the
SALMON in the
image below.

9



Chemist

Pharmacist

Microbiologist

Environmental Science

Physicist

Scientist

The Biology Department is committed to excellence in both research and teaching, and we strive to provide a rigorous, balanced education in Biology for all our students.

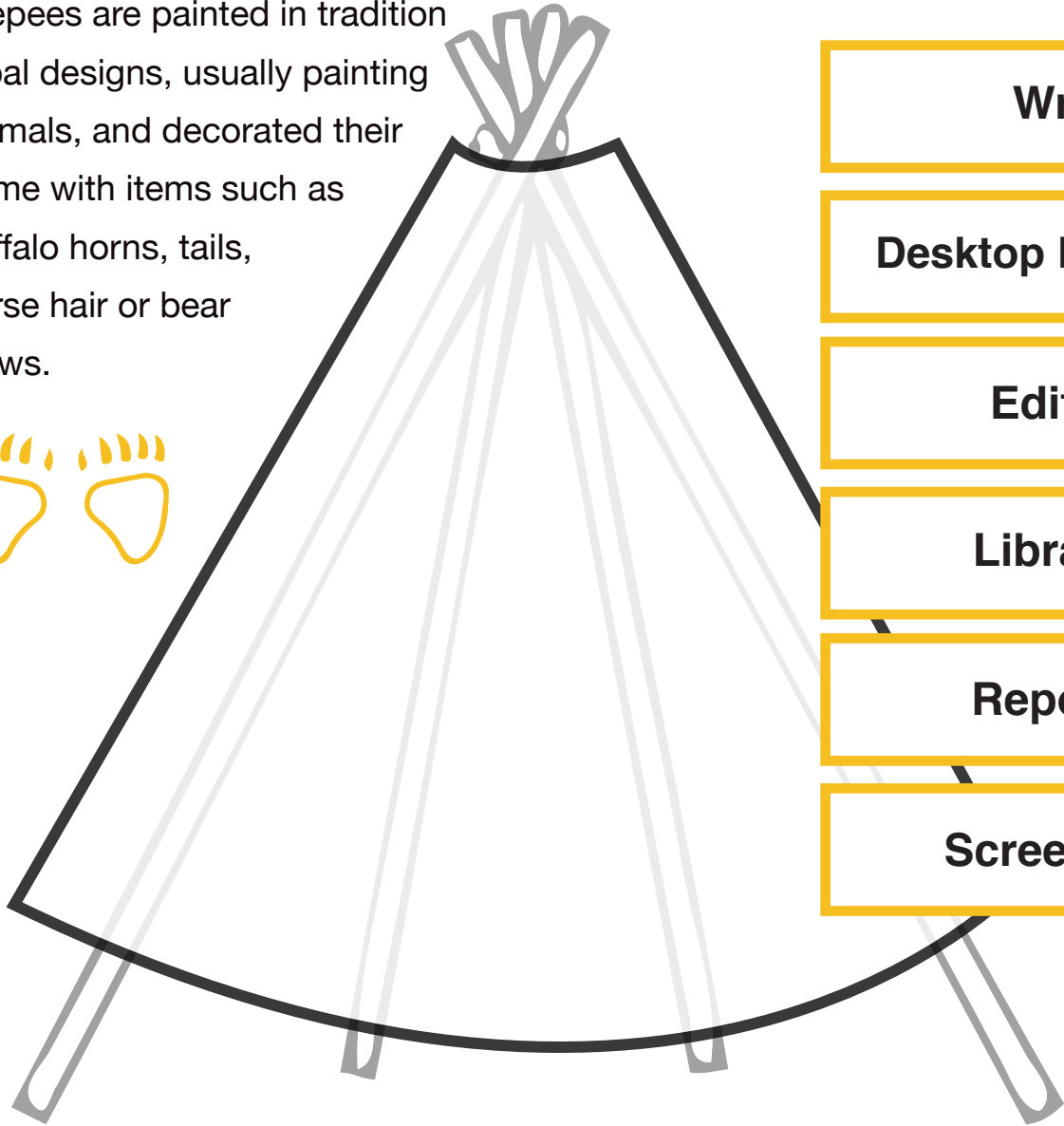
<http://www.pdx.edu/biology/>

Suzanne Estes,
Chickasaw/Choctaw
Associate Professor
Department of Biology
estess@pdx.edu

IF YOU LOVE TO READ, then look at these possible careers...



Teepees are painted in traditional tribal designs, usually painting animals, and decorated their home with items such as buffalo horns, tails, horse hair or bear claws.



Writer

Desktop Publisher

Editor

Librarian

Reporter

Screenwriter

English department offers a wide variety of undergraduate and graduate courses to meet the needs of students with a diversity of interests, and academic and professional backgrounds. <http://www.english.pdx.edu>

Grace L. Dillon

Anishinaabe,
PhD., Associate Professor
Indigenous Nations Studies
Affiliated faculty/ English
Popular Culture Cluster Coordinator
dillong@pdx.edu

IF YOU LIKE SOCIAL STUDIES, then look at these possible careers...



There over 500 Native tribes in North America. Below you will find 25 of those tribes. Each one appears in the puzzle—horizontally, vertically, and diagonally.

S I L E T Z H N P H S T C S K
 I H O H S E E I O I I A Q O R
 T M K Z I Z L O S G L U U E B
 Y S M C G U P T N T A A H K K
 P O I U O A M I T X O P L C O
 Q E Y G L W L P I A A R O U O
 U N A T O T L N Q R I Q I E T
 I A K I H L C I G U U U T A E
 N K A G C P P O T I A U S R N
 A O M A Y J E O L Z I F N E A
 L P A K S G N L R A O A H N I
 T S G S P Z E N P H B P A N S
 E C O N O M I S T R T E I A O
 P U L L A Y U P U H X N D L O
 K L A M A T H S I M A S A P C

COOS
 COQUILLE
 COWLITZ
 HAIDA
 HOH
 HOOPA
 KLAMATH
 KOOTENAI

LUMMI
 NEZ
 PAIUTE
 PERCE
 PUYALLUP
 QUINALT
 SAMISH
 SAUK

SILETZ
 SKAGIT
 SPOKANE
 SQUAXIN
 SUIATTLE
 TLINGIT
 TULALIP
 UMPQUA
 YAKAMA

Economist

Historian

Anthropologist

Geographer

Psychologist

Urban Planner

Dr. Cornel Pewewardy

Comanche & Kiowa
 Professor & Director
 Indigenous Nations Studies

Dr. Robert Ryan

Cheyenne River Sioux Tribe-SD
 (Mato Topa)
 PSY Psychology

Don't forget to visit:

www.anthroplogy.pdx.edu
www.pdx.edu/psy
www.pdx.edu/nas

IF YOU LOVE MUSIC AND ART, then look at these possible careers...



She Who Watches, Tsagaglal, is not like most of the rock images found in the Columbia River area, She Who Watches is rock etchings (petroglyph) and rock paintings (pictographs). Draw your own pictographs below.

Actor

Photographer

Artist

Dancer

Designer

Musician

School of Art + Design is dedicated to helping students understand and explore the ways that artists and their works function within a larger social context.

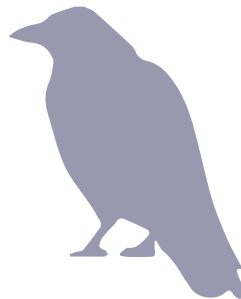
www.pdx.edu/art-design/



**IF YOU LIKE BUILDING & FIXING THINGS,
then look at these possible careers...**



Carvers and sculptor produce monumental words in cedar, bronze, glass, and enameled steel. Name and color the Native American symbol.



Carpenter

Automotive Mechanic

Drafter

Architect

Civil Engineer

Electrician

Learn More Go to
<http://www.pdx.edu/cecs/>
<http://www.pdx.edu/architecture/>

IF YOU LIKE HELPING PEOPLE,
then look at these possible careers...



Kristin Engelbretson

Turtle Mountain Band of Chippewa
Indians, Administrative Coordinator
Office of International Affairs
Education Abroad
krise@pdx.edu



Gabrielle Green

Klamath Tribes
Assistant Lead Toddler Teacher
ASPSU The Children's Center
ggreen@pdx.edu

Educator/Teacher

Childcare Worker

Firefighter

Registered Nurse

Social Worker

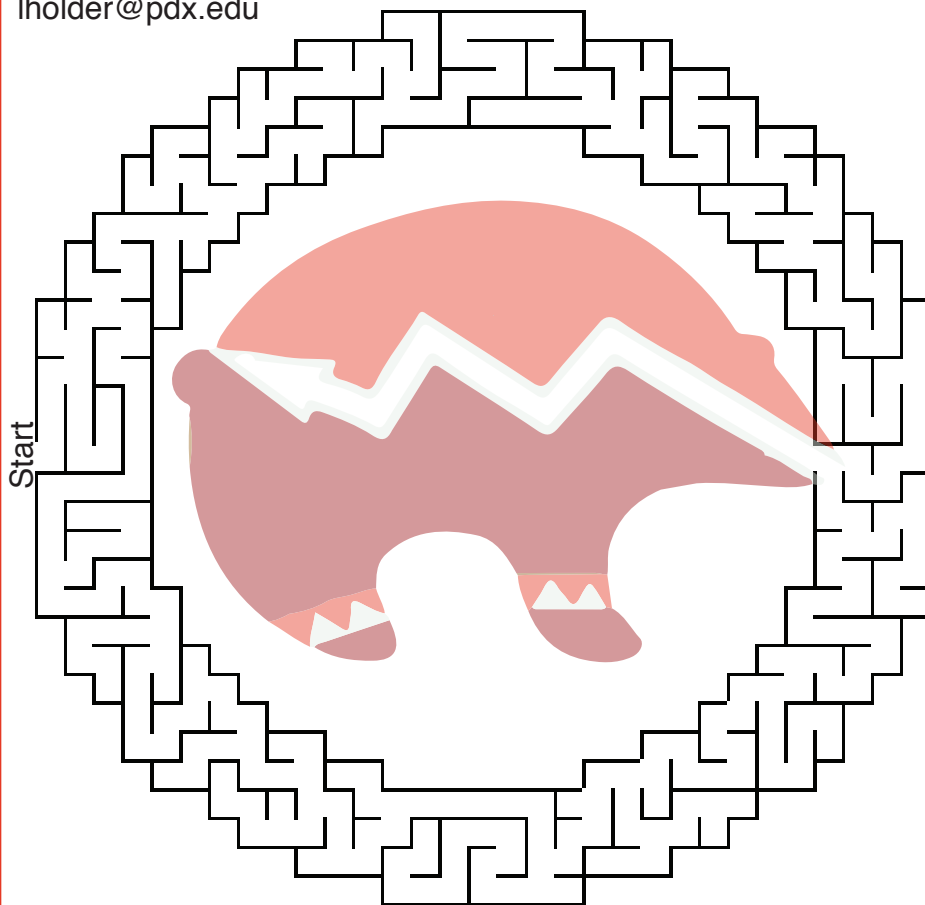
Physician

Lea Ann Holder

Chickasaw Nation
Faculty Advisor/Coordinator
Graduate School of Social Work,
Child Welfare Partnership
lholder@pdx.edu

Elizabeth "Lisa" Norton

Confederated Tribe of Siletz
School of Social Work, Instructor
nortone@pdx.edu



Learn More Go to
<http://www.pdx.edu/education>

[www.pdx.edu/careers/
resources-for-pre-
health-students](http://www.pdx.edu/careers/resources-for-pre-health-students)

<http://www.pdx.edu/ssw>

IF YOU ARE INTERESTED IN THE LAW,
then look at these possible careers...



PSU Student Legal Services:
We encourage students' full participation in their academic endeavors by helping navigate obstacles to fulfilling educational and career goals.

<http://www.pdx.edu/sls/>

Police Officer

Lawyer

Court Reporter

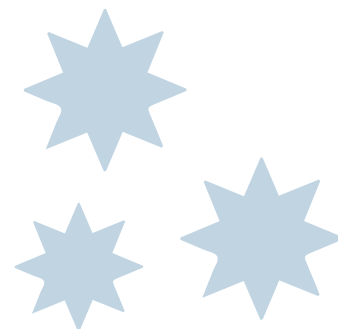
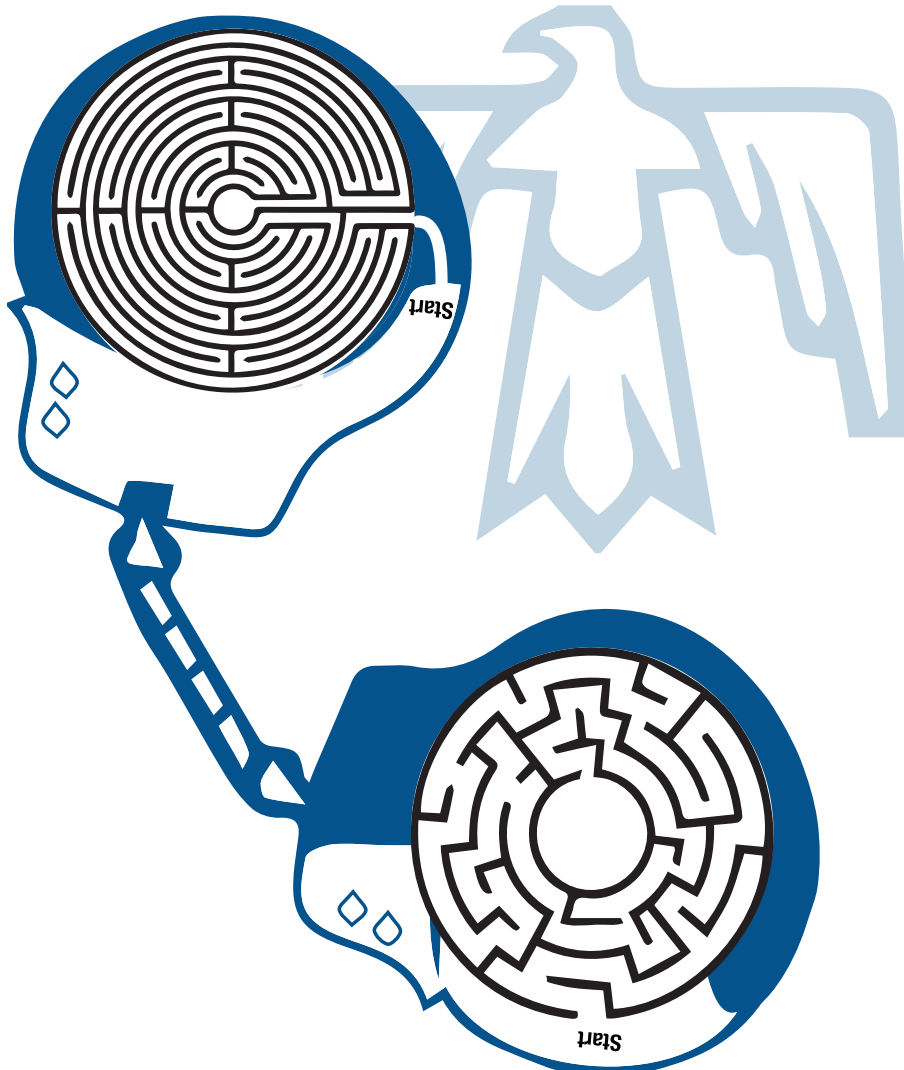
Judge

Paralegal

Security Guard

Alyssa Dart

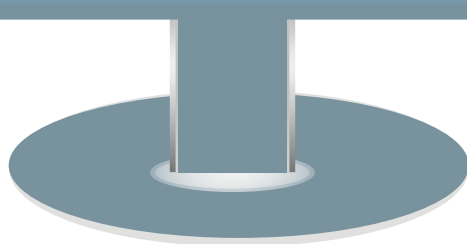
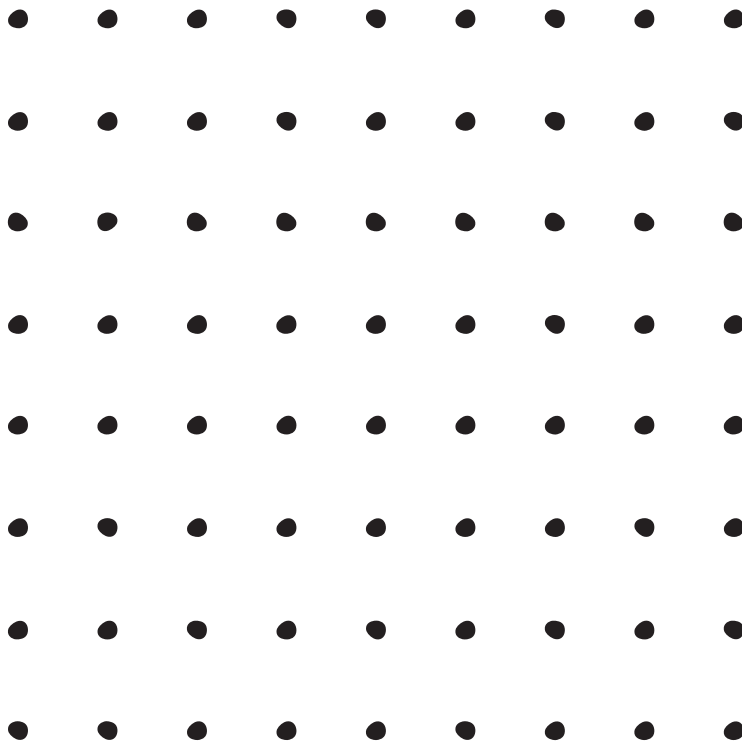
Hatfield School of Government
Advisory for Political Science
Criminology & Criminal Justice
dart@pdx.edu



IF YOU ARE INTERESTED IN COMPUTER
then look at these possible careers...



Grab a Friend and Connect the Dots



A player who completes the fourth side of a 1×1 box earns one point and takes another turn. The game ends when no more lines can be placed. The winner of the game is the player with the most points.

Database Administrator

Support Specialist

Hardware Engineer

Software Developer

Web Developer

System Analyst

Computer Science Department at specialize in a variety of research areas, including computer graphics and vision, computer security, databases, intelligent systems, programming languages, software engineering, open source software, sensor networks and other aspects of networking.

<http://www.pdx.edu/computer-science/>

IF YOU LIKE MANAGING MONEY, then look at these possible careers...



- 1 BUY TEXTBOOKS FROM USED BOOKSTORES.**
- 2 SEEK ALTERNATIVE TRANSPORTATION:** If the system is run by your university, you'll probably be able to ride for free with a student ID.
- 3 CHOOSE THE RIGHT MEAL PLAN:** Make a budget.
- 4 SET UP A STUDENT CHECKING ACCOUNT:** Usually there are free for students.
- 5 GET ORGANIZED:** Monitor your spending habits and cut back.
- 6 BE CREATIVE WITH YOUR LEISURE TIME:** Ask for student discounts, use your free resources (library, museums, student art galleries, theater).
- 7 FIND A JOB:** If you have some spare time, get a weekend job.
- 8 GET THE RIGHT CELL PHONE PLAN:** Do you really need unlimited?
- 9 BE SMART ABOUT APARTMENT LIVING:** Save money by splitting the rent with a few roommates and conserve (turn off the light, use little water, and use the A/C and heat sparingly).
- 10 LOOK FOR SCHOLARSHIPS:** Many scholarship programs give you the opportunity to apply each semester.

Accountant

Financial Analyst

Loan Officer

Bookkeeping Clerk

Budget Analyst

Business

Julie Smith

The Klamath Tribes
Director of Marketing,
University Communication
smithju@pdx.edu

Theresa Kaimanu

Shoalwater Bay Nation
Associate Professor,
Public Administration
d1tj@pdx.edu

For More information visit
[http://www.pdx.edu/
professional-development/](http://www.pdx.edu/professional-development/)

IF YOU LOVE NATURE, then look at these possible careers...



Draw your own totems. Everything in life is a circle like the Medicine Wheel which itself represented the whole of Creation. **Each person moves along the Wheel in their own way and at their own speed.**

Zoologist

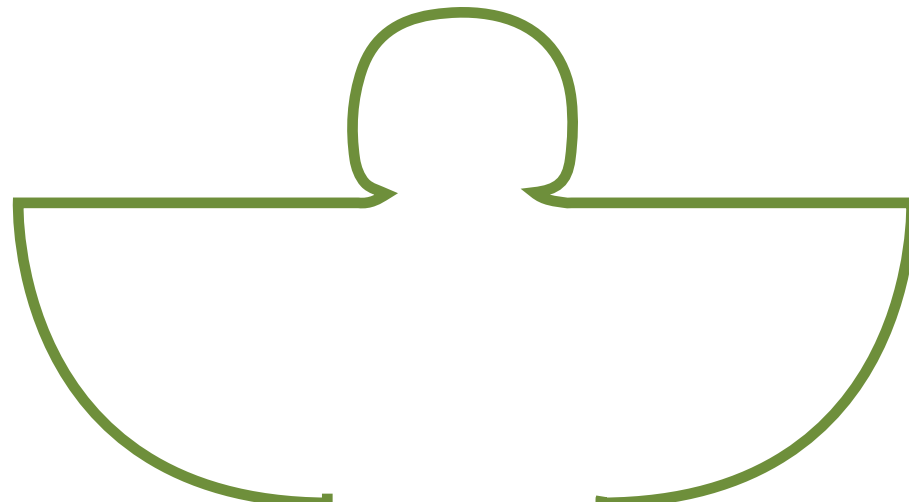
Landscape Architect

Farmer

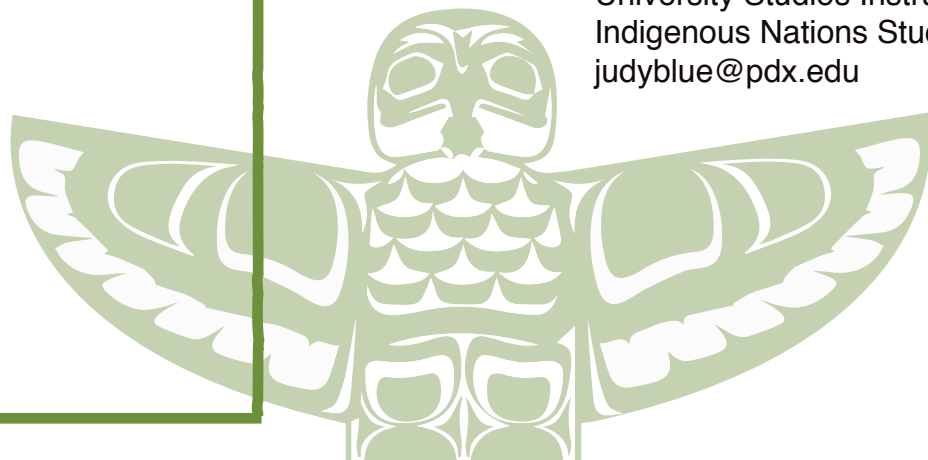
Veterinarian

Agricultural

Food Scientist



Don't Forget to Visit
<http://www.pdx.edu/geography/agriculture>



Judy Bluehorse Skelton
Nez Perce/Cherokee
University Studies Instructor
Indigenous Nations Studies
judyblue@pdx.edu

IF YOU LIKE SPORTS, then look at these possible careers...



The modern game hockey is based on a game called stick-ball that the North American indians played.

HOW TO PLAY :

1. Players face each other on a field with goals at either end.
2. A small ball is handled by players using long sticks ending in a loop.
3. Each team tries to advance the ball down the field to the other team's goalpost, while never touching the ball with their hands.
4. Points are scored when the ball strikes the opponent's goal.

Referee

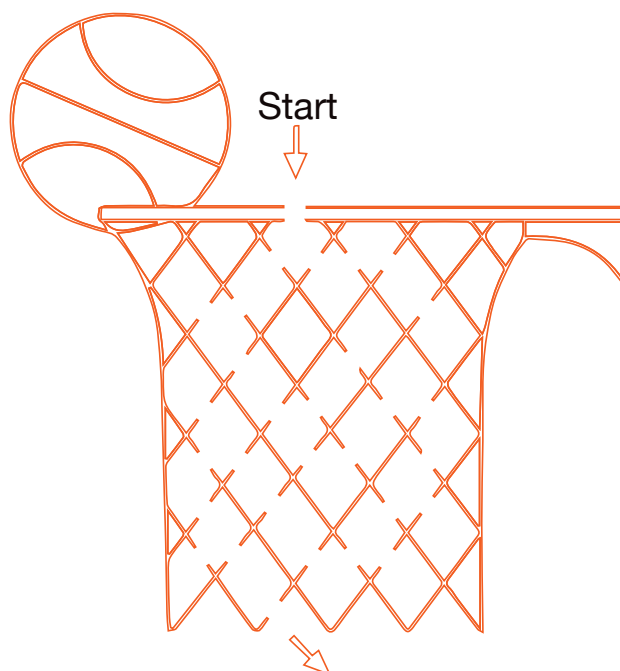
Professional Athlete

Coach

Fitness Trainer

Recreational Therapist

PE Instructor



Our PSU Vikings compete in NCAA Big Sky Conference basketball, cross country, football, golf, soccer, softball, track, volleyball, and wrestling, goviks.com. Get active with your peers or join the outdoor program, intramural sports, rec clubs and group fitness classes, and aquatics. From aerobics to yoga, engage your body and your mind in for-credit recreational classes at Portland State.

www.physed.pdx.edu

PSU

college life

REASONS YOU SHOULD GO TO COLLEGE

- 1 earn GOOD pay. Most college graduates earn a lot MORE money during their working years than people who stop their education at high school.
- 2 the more education you get, the more likely you will get a job.
- 3 continuing education after high school is much more important for your generation than it was for your parents' generation. Today, most good jobs require more than a high school diploma.
- 4 education beyond high school gives you the opportunity to explore your interests and experiencing success.

Who do I see about going to college? What Is my first step?

Melissa Bennett

Umatilla/Nez Perce, Navajo Nation
(Dine')/ Blackfoot Lakota
OSA NA Cultural Center
melissa.bennett@pdx.edu

Mariah Riddle

Northern Cheyenne Tribe
HRC Human Resource Center
Payroll/Benefits Systems Coordinator
middle@pdx.edu

Dean Azule

Pima Indian AZ
Coordinator, Diversity
and Multicultural Student Service
azule@pdx.edu



GET READY *High School*

FIGURE OUT WHAT YOU WANT TO DO

1. Start thinking about **your future** and **career** possibilities.
2. Explore different occupations that match your interests.
3. College-track courses to start taking in Middle School and High School
4. Talk to your school counselor
 - a. Ask about financial aid (FASFA) programs
 - b. Standardized test (ACT, PSAT, & SAT)
5. Apply for scholarships
6. Academic enrichment programs available through your school or colleges.
7. Visit Colleges!
8. Pursuing extracurricular activities (such as sports, performing arts, volunteer work, or other activities that interest you).



Go to:
<http://www.pdx.edu/dmss/>
<http://www.pdx.edu/advising/>

SOURCES *Thank you*

Portland State University
www.pdx.edu

Know How 2 Go
<http://www.knowhow2go.org>

United States Department of Labor
<http://www.bls.gov/k12/money.htm>

SPONSORS

PSU Healing Feathers
www.pdx.edu/nativestudents/healing-feathers

American Indian Urban Teacher Program
www.pdx.edu/aiutp